



GripView

Mobile device to measure the tread depths of vehicle tires

Product description

GripView is a mobile device to measure the tread depth of truck, bus and car tires.

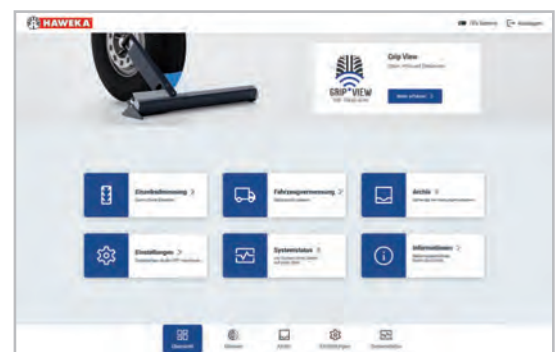
The measurement is made by means of a 70 mm wide strip across the tire profile – a camera captures every tread groove down to an actual tread depth of 25 mm.

A wear pattern of the tire can be detected early enough so that conclusions about errors in the axle geometry or incorrect air pressure can be drawn.



Product features

- GripView – Optimal for fleet management, tire trade, tire industry and workshops
- Mobile, wireless device, simple operation
- Scans a 70 mm wide strip across the tire tread
- Total measuring range 700 mm for dual tires or super single tires
- Automatic data capturing via the camera, transmission of the photo data via WLAN to the tablet
- Android-based software / App (Google play)
- Measurement up to 25 mm tread depth
- Exact repeatable measurement thanks to the internal calibration and constant checking of the saved values
- 500 measurements with one battery charge – enough for a working day





PRODUCT INFO

Product Overview

GripView

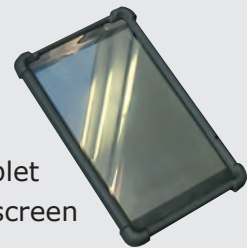
item no.: 930 000 006



1 x Charger



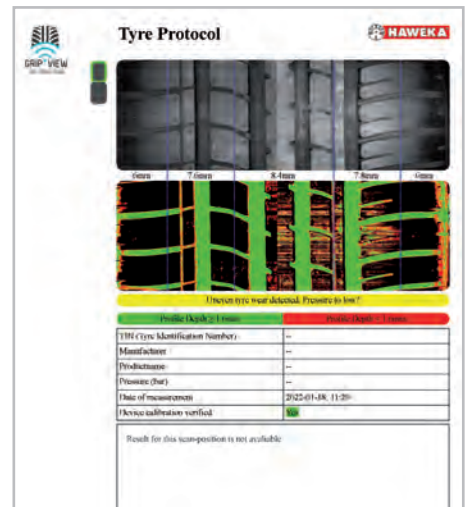
2 x Battery Packs



1 x Tablet
10.1" screen

Technical data and dimensions

Supply	Li-Ion Akku: 18 V / 2,0 Ah
Class of Laser	2 -> DIN EN 60825-1
IP Code	IP 54
Temperature Range	0° - 50° C
Tread depth measurement	max. 25 mm
Scan Width/Length	70 mm / 700 mm
Accuracy	+/- 0,1 mm
Weight	10,7 kg



Protocol of the measurement by the software

